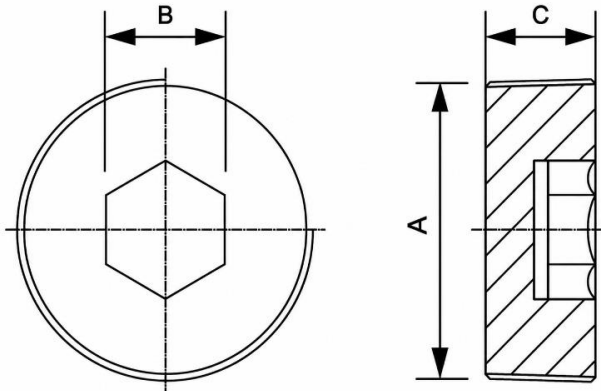


# Allen Key Plug

## Metric Thread

### MM-EX-PLG6M B2 (M63)



**Metric Thread**

#### Allen Key Type Stop Plugs For Explosion Proof Application

<b>IP Rating</b>	IP68
<b>IECEx Certificate No.</b>	IECEx PRE 20.0123X
<b>ATEX Certificate No.</b>	Presafe 20 ATEX 24571X
<b>EAC Certificate No.</b>	RU C-IN.AA71.B.00212/20
<b>PESO Certificate No.</b>	P538496/3
<b>Thread Type</b>	Metric
<b>Protection Type</b>	Ex d, Ex e, Ex t
<b>Material</b>	Brass Nickel Plate (BNP)
<b>Ambient Temperature</b>	IECEx/ATEX-55°C ≤ Ta ≤ +160°C EAC-60°C ≤ Ta ≤ +130°C
<b>Gas Group</b>	II C

#### Metric Thread

---

<b>CODE</b>	MM-EX-PLG6M B2 (M63)
<b>A</b>	M63X1.5
<b>B</b>	14
<b>C</b>	24

**EPL (Equipment  
Protection Level)**

Zone 1, Zone 2 Gb, Gc, Gas  
Zone 21, Zone 22, Db, Dc Dust

---

\* Degrees of protection (IP Code) : IP66 / IP68 (1.5 meter, 2 Hours)